

# SPC FLOORING



 ELEGANZA™  
modern movement *redefined*



# Feature

- It's easy to install no messy glueing or nailing. It's pre-finished, so no sanding and painstaking finish work.
- It is 100% waterproof. it can be installed in kitchens, bathrooms, laundry rooms and restaurants without worry! This is one of the biggest factors in choosing SPC.
- SPC Flooring is stable in environments with temperature changes, specially, homes with humidity fluctuations.
- SPC flooring has a variety of looks, textures and styles assuring to have a perfect match to your decor.
- With an easy yet strong click and lock system the tongue and groove style makes for an easy installation.
- The SPC floor is going to feel more sturdy and cushioned under foot than a traditional LVT due to a polymer core. SPC has an attached underlayment that adds to the softness under foot.
- With the polymer core, this plank will have a quieter sound. The hollow sound of traditional LVT will no longer be an issue.
- SPC Flooring is designed to be easily cleaned with regular sweeping or chemical free cleaners.

Feature	Eleganza SPC	Vinyl flooring	Engineered wood
Anti-scratch	✓		
Waterproof	✓		
Anti-termite	✓	✓	
Anti-slip	✓		
Fire Resistant	✓	✓	
Low elasticity and bending	✓		
Environment-friendly	✓		✓
Health safety	✓		✓
Easy to install	✓	✓	✓
Low maintenance cost	✓	✓	✓





# IDAHO OAK



Name	2G		Thickness (mm)	Wearlayer (mil)	Backing
Size/Code	9x48 inch EIR*	32CIN2116	6.5mm	22	IXPE 1.5mm
	9x60 inch EIR*	42CIN2116	6.5mm	22	IXPE 1.5mm
Finish	Matt				

\* EIR: The embossed physical grain of the wear layer is married to the image film.





# DAKOTA OAK



Name	2G		Thickness (mm)	Wearlayer (mil)	Backing
Size/Code	9x48 inch EIR*	32CIN2117	6.5mm	22	IXPE 1.5mm
	9x60 inch EIR*	42CIN2117	6.5mm	22	IXPE 1.5mm
Finish	Matt				

\* EIR: The embossed physical grain of the wear layer is married to the image film.





## COLORADO OAK



Name	2G		Thickness (mm)	Wearlayer (mil)	Backing
Size/Code	7x48 inch	11AIN2003	5.5mm	12	IXPE 1.5mm
Finish	Matt				





# CAROLINA OAK



Name	2G		Thickness (mm)	Wearlayer (mil)	Backing
Size/Code	7x48 inch	11AIN2012	5.5mm	12	IXPE 1.5mm
Finish	Matt				





## CARYA PECAN



Name	2G		Thickness (mm)	Wearlayer (mil)	Backing
Size/Code	9x48 inch	32CIN2004	6.5mm	22	IXPE 1.5mm
Finish	Matt				





# MINNESOTA OAK



Name	2G		Thickness (mm)	Wearlayer (mil)	Backing
Size/Code	7x48 inch	11AIN2007	5.5mm	12	IXPE 1.5mm
Finish	Matt				





# IOWA HICKORY



Name	2G		Thickness (mm)	Wearlayer (mil)	Backing
Size/Code	7x48 inch	11AIN2009	5.5mm	12	IXPE 1.5mm
	9x48 inch	32CIN2009	6.5mm	22	IXPE 1.5mm
Finish	Matt				





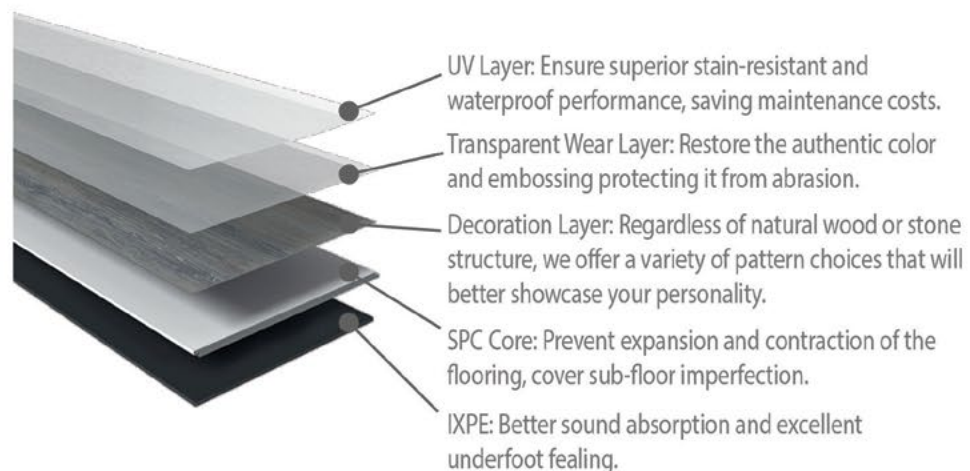
# GEORGIA HICKORY



Name	2G		Thickness (mm)	Wearlayer (mil)	Backing
Size/Code	9x48 inch	32CIN2011	6.5mm	22	IXPE 1.5mm
Finish	Matt				



## DETAIL & SIZE SPC



	Size (inch)	Thickness (mm)	Wearlayer (mil)	Backing	Painted edge
1	7x48"	5.5mm	12	IXPE 1.5mm	4mm
2	9x48"	6.5mm	22	IXPE 1.5mm	5mm
3	9x60"	6.5mm	22	IXPE 1.5mm	5mm

## SPC MOLDING

Type	SPC Moulding	Size	Style	Weight/ PC (Lbs)	Packing (PCS/ CTN)
T-Molding		94 1/2" x 1 3/4" x 5/16" 2400 x 45 x 8mm	match 4mm-8mm floor	1.63lbs/pc	25
Reducer		94 1/2" x 1 3/4" x 3/8" 2400 x 45 x 9mm	match 4mm-8mm floor	2.05lbs/pc	25
Flush Stairnose		94 1/2" x 4 1/2" x 1" 2400 x 115 x 25mm	match 4mm -5mm floor	5.33lbs/pc	6
Quarter Round		94 1/2" x 1 1/8" x 5/8" 2400 x 28 x 15mm	match 4mm-8mm floor	1.43lbs/pc	25

## SPC TECHNICAL SHEET

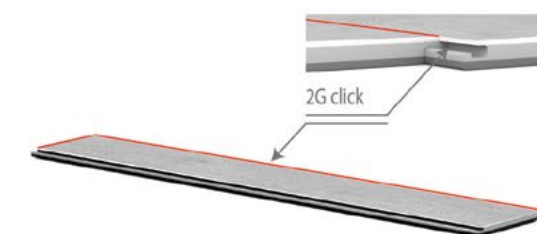
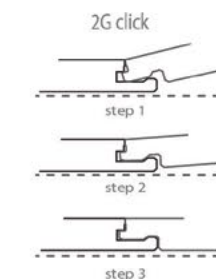
No	Description	Note
1	Milling	US Market License
2	Grain Film	Ultra HD Imaging wood grain
3	Look	EIR or without EIR
4	Color Variation	Low
5	Plank length & width	7x48 inch, 9x48 inch, 9x60 inch
6	Plank thickness (Without foam pad)	0.15", 0.19", 0.23"
7	Wear Layer	12mil, 22mil
8	UV Surface	8-10g
9	Installation type	2G
10	Residential Warranty	20 Year
11	Commercial Warranty	10 Year
12	Application	Residential, Commercial
13	Radiant heat compatible	-4°F to 122°F
14	Abrasion Resistance	BSEN 13329:2019 AC3
15	Impact resistance	BSEN 13329:2019 1750 mm
16	Resistance to staining	BSEN 13329:2019 Grade 5
17	Resistance to cigarette burns	BSEN 13329:2000 Grade 5
18	Surface soundness	BSEN 13329:2019 1.52 N/mm2
19	Fomaldehyde	BSEN 717-3 No fomaldehyde



Wear layer	Warranty		
	Residential	Light Commercial	Commercial
12 mil	Lifetime limited	6 years	
22 mil	Lifetime limited	25 years	20 years

## Patented Locking

Locking System Patented By Valinge Sweden



\*Click & Lock licensed from Sweden  
\*Protected in USA and Worldwide



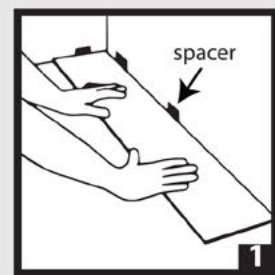
- Easier to install.



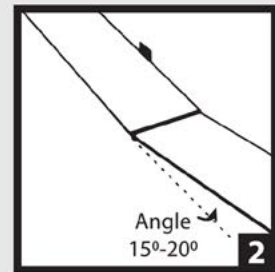


## Site Conditions

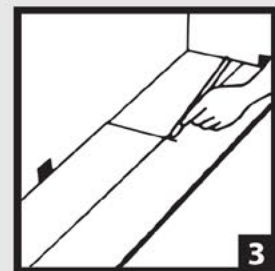
- A. Existing floor surface level must be within acceptable level with a tolerance level of 1mm only. Otherwise, this will cause high low between planks and waviness effect after completion.
- B. It is advisable to do self-leveling cement before laying plank for uneven floor.
- C. Uneven wall surface will cause a gap between plank and wall, it is advisable to skim coat the gap when floor completed. This can be substituted with wall skirting.
- D. If floor skirting is excluded, it is advisable for the plank to be installed first before any wall panel/partition furniture lay to avoid visible gap between wall and the plank. In this installation, floor cover is compulsory to protect the completed flooring.
- E. If floor skirting is included, it is advisable for the plank to be installed last to avoid damage to the SPC flooring.



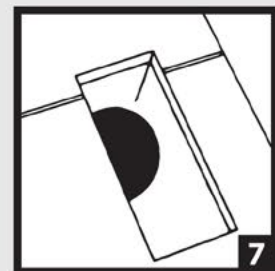
Start at a corner. Place first plank with tongue side facing wall. Use spacers to maintain an expansion space of 2-3 mm between wall and flooring.



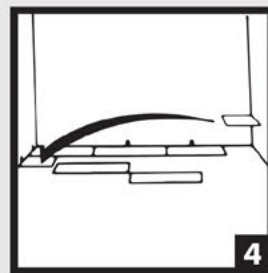
Insert 2nd plank's end tongue to 1st plank's end groove at an angle of 15° to 20°. The plank will click into place when lowered. Line up edges carefully. Planks should be flat to the floor.



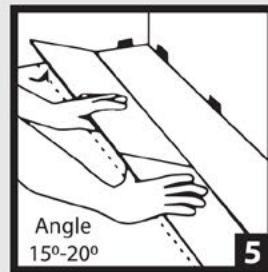
For the last plank of a row, flip a full plank to its under side and place beside the row. Measure and mark the required length. Use a ruler and utility knife to score the plank and snap off. Insert as per previous diagram.



Heating vents require expansion room. First, cut plank to the correct length. Place the cut plank at its actual position and use a ruler to measure the areas to be cut out and mark them. Cut out the marked points allowing the necessary expansion distance.



Begin the next row with the last cut off piece from the previous row to stagger the pattern.



To start second row, assemble your entire row on the subfloor before attaching it to the first row. To attach, tilt and push the side tongue into the side groove of the first row at an angle of 15° to 20°. Lower and click into place lining the edges up carefully. Continue laying remaining planks in this manner.

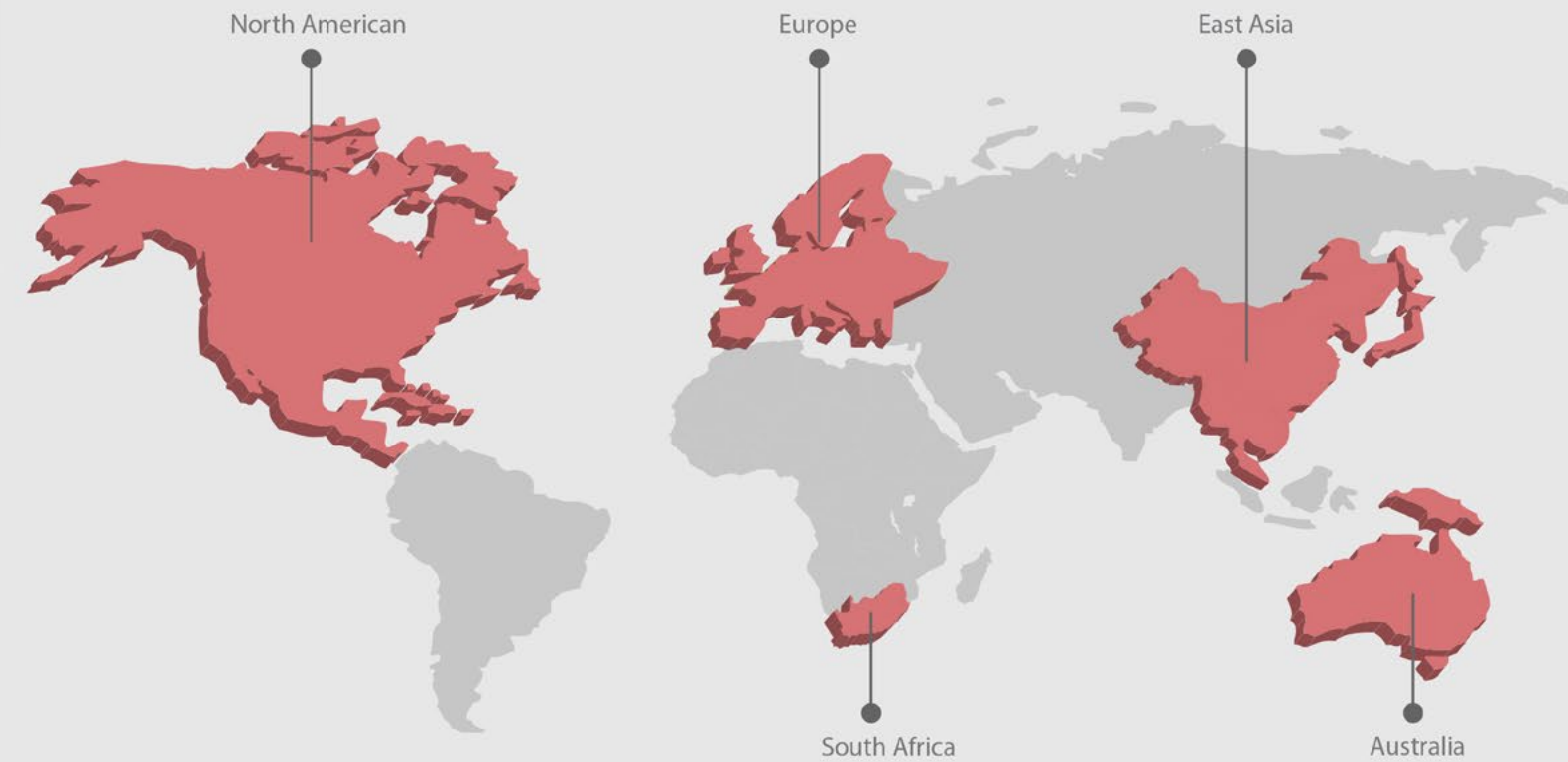


To fit the final row, lay a plank upside down on the flooring as per diagram with the tongue side close to the wall. Take another plank and place it right on top of the previous row and use it as a ruler. Don't forget to allow room for spacers. Cut the plank and attach into position.



The gap between the bottom of a door and the SPC flooring should be 1 cm height. To trim door frames, turn the plank upside down. Place it next to the door frame as per diagram. Use a handsaw and cut away the necessary height so that the planks can slide easily underneath the frame.

**ELEGANZA**  
modern movement redefined



We have invested in science and technology to create environmentally friendly products, which fully meet international quality standards. ELEGANZA SPC focuses on countries such as: Europe, North America, East Asia, Australia, and South Africa. Established Eleganza as an innovative leader in the world SPC flooring market.





e-mail us [info@eleganzatiles.com](mailto:info@eleganzatiles.com)  
on the web [eleganzatiles.com](http://eleganzatiles.com)

#### ANAHEIM

Tel: 714.224.1700  
3125 E. Coronado St. Anaheim,  
CA 92806

#### DALLAS

Tel: 972.247.3900  
2230 LBJ FWY, Suite 200, Dallas,  
TX 75234

#### HOUSTON

Tel: 346.312.8512  
10618 Tanner Rd, Ste 100 Houston,  
TX 77041

#### ILLINOIS

Tel: 224.222.1390  
2200 East Devon Avenue, Elk Grove Village,  
IL 60007

#### NEW JERSEY

Tel: 732.287.2550  
3 Taylor Road, Edison,  
NJ 08817